



Access Surf Coast Oceans and Trails

Enabling people with a disability to access sandy beaches, ocean and trails in the Surf Coast Shire.

Accessible all-terrain and beach wheelchairs can be hired from a number of locations in the Surf Coast Shire. To ensure the availability and collection of a wheelchair, please book ahead by phoning the organisations listed below.

Sandcruiser beach wheelchair

Go Ride a Wave

Ph: 1300 132 441 | www.gorideawave.com.au

Anglesea Surf Life Saving Club (SLSC)

Ph: 03 5263 1107 | www.angleseaslsc.org.au

YMCA Anglesea Recreation Camp

Ph: 03 5263 1512 | www.camps.ymca.org.au

TrailRider All-Terrain wheelchair

Surf Coast Shire Sport and Recreation Centre

Ph: 03 5261 4606 | www.surfcoast.vic.gov.au

Aussie beach wheelchair

YMCA Anglesea Recreation Camp

Ph: 03 5263 1512 | www.camps.ymca.org.au

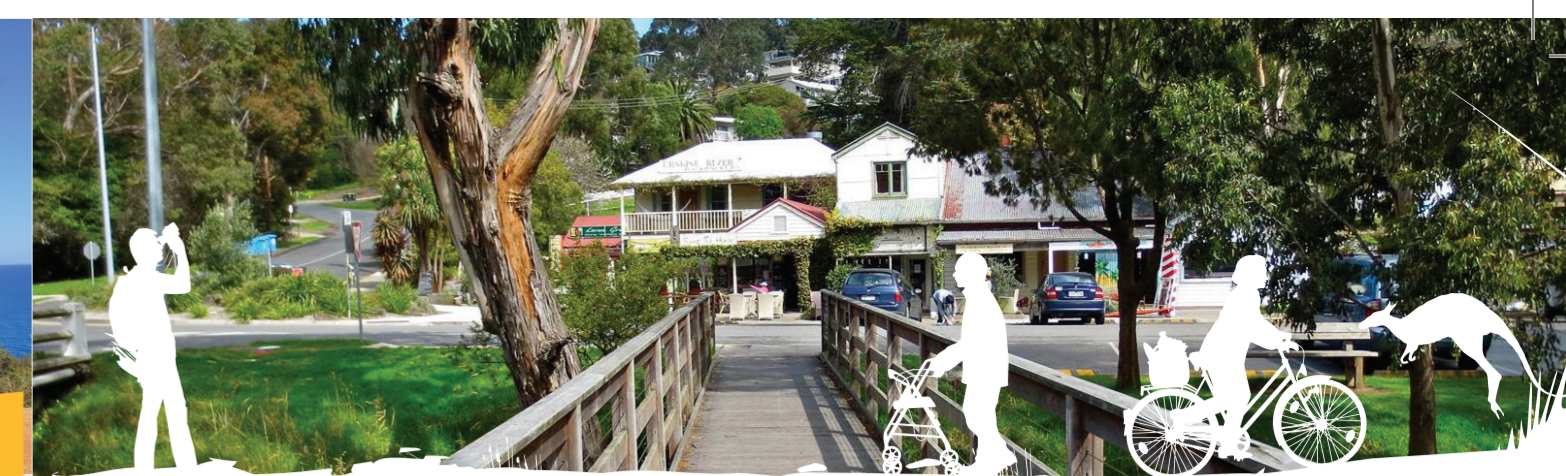
Hippocampe beach wheelchair

YMCA Anglesea Recreation Camp

Ph: 03 5263 1512 | www.camps.ymca.org.au



Beach Wheelchair and Trail Rider Wheelchair
FREE HIRE



Scooter Recharge Scheme

Recharge your electric scooter or wheelchair in Lorne. The recharge symbol on the map highlights locations in the Surf Coast where you can recharge the battery on your scooter or wheelchair whilst out and about in the community.

For a list of all recharge locations in the Shire visit www.surfcoast.vic.gov.au

You can find more information on the Recharge Scheme & find locations across Australia at www.rechargescheme.org.au

Did you know...

That RACV offers emergency roadside assistance for scooters and wheelchairs? Call 13 7228 for details. You can also check with other breakdown service companies

Safety tips for scooters

- Stay within the legal speed limit of 10km/h
- Be seen - use a flag, wear bright or high visibility clothing, use lights and reflectors
- Use the safest quietest route
- Share footpaths - warn pedestrians that you are coming
- Take extra care when crossing roads - don't assume cars will stop for you

For more detailed information including road rules that apply to motorised mobility devices in Victoria, see the VicRoads brochure *A guide for choosing and using motorised mobility devices: mobility scooters and electric wheelchairs* from the VicRoads website www.vicroads.vic.gov.au



Access Surf Coast

The Access Surf Coast maps are designed to provide better information to help you get out and about to access your community, whether you're walking, in a wheelchair or scooter or pushing a pram. The maps highlight accessible features, the most accessible pedestrian routes, and provide useful information on public transport, town features and more.

Council is committed to promoting accessible and inclusive services for all people.

Creating Access Surf Coast maps enables people with mobility issues who live in or visit our towns to identify accessible features and better access their community.



Feedback

Council values your feedback.

Was this map useful?

To provide feedback on this map please contact us on **5261 0600** or email info@surfcoast.vic.gov.au

If you identify an urgent access issue or hazard, please contact us.

Surf Coast Shire Pathway Strategy

In 2006, the Surf Coast Shire developed a Pathway Strategy to establish a good quality pathway network to improve physical and social connections and promote good health. The Strategy outlines a comprehensive plan of existing and potential pathway linkages including footpaths, shared pathways, on-road bike lanes and walking tracks.

For more information including how to submit a pathway request, visit www.surfcoast.vic.gov.au/For_Developers/Pathways



Public transport in Lorne

V/Line operate daily services along the Great Ocean Road between Apollo Bay and Geelong through Surf Coast towns. Some V/Line coach services are wheelchair accessible.

Timetables indicating wheelchair accessible services

www.vline.com.au/pdf/timetables/apollobay.pdf
www.mcharrys/timetables/apollobay

People who are vision and hearing impaired

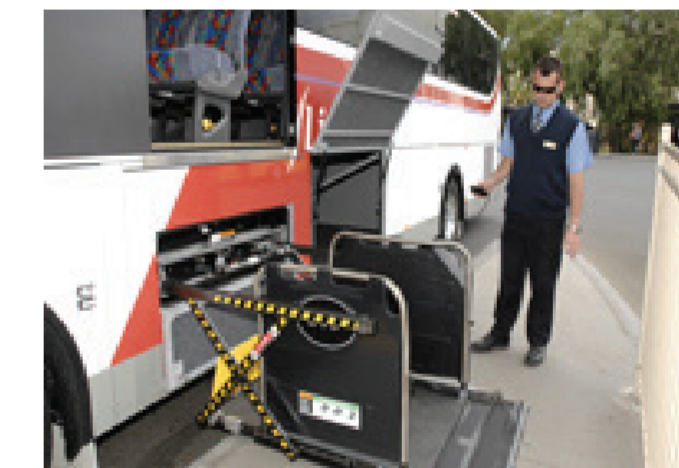
Guide dogs, hearing guide dogs, guide dogs in training and approved assistance animals are permitted on all V/Line services.

Fares and concessions for people with disability and carers

There are a number of concessions and free travel pass options for people with a disability and carers who travel on public transport in Victoria. Information and application details can be downloaded from the Public Transport website <http://ptv.vic.gov.au/tickets/free-travel-passes> or contact **1800 800 007** for further information.

Lorne Taxi service: 0409 892 304
(7 seater maxicab)

Surfcoast Taxi service: 0408 325 992
Wheelchair accessible taxi & maxicabs available. Advanced bookings are recommended.



P Accessible parking spaces are identified on the map with this symbol.

Did you know...

There are two types of accessible parking permit categories that can be issued to a person based on their need for assistance.

Category One: Blue

A blue parking permit entitles a person to park in a parking area or bay designated for use by people with disabilities, for the time specified for that area.

Category Two: Green

A green parking permit allows a person to park in any regular parking bay for twice the amount of time indicated by the sign.

A person can only be eligible for one permit based on the assessment of their need for assistance.

How do I apply?

For more information, including how to apply and what the assessment process involves, contact customer services on **(03) 5261 0600** or search under forms, permits and applications on the website: www.surfcoast.vic.gov.au

Surf Coast Shire Council has made every effort to ensure the accuracy of this information at the time of printing, and cannot be held liable for changes to services and assets.

PLEASE NOTE: These assets and services have not been audited for accessibility (e.g. AS1428 Australian Standards for Access and Mobility).



For more information on travelling and staying in Surf Coast and the Great Ocean Road, contact the Torquay or Lorne Visitor Information Centres.

Torquay 5261 4219 | Lorne 5289 1152
www.visitsurfcoast.com

Mobile Library Service

Geelong Regional Libraries operate a mobile library service in Aireys Inlet. The mobile library stop is located on Mountjoy Parade. The mobile library enables access into the bus for all people, including wheelchair users via a hydraulic lift. The library vehicle is fitted out with a larger than usual floor space enabling people with mobility needs to move about the space.

The service offers free WiFi and computer use, scanning and printing services. There are also iPads and iPad Minis available for use on board.

For timetable information please visit www.grlc.vic.gov.au/locate/mobile-libraries



Lorne – Mountjoy Parade

Extending from the Visitor Information Centre in the north to the Lorne Hotel in the south there is a range of experiences on offer throughout the shopping area along Mountjoy Parade. Generally easy graded sealed footpaths, with many seats and on street accessible parking provide support for everyone to the many shops, cafes and other businesses available along the western side, while there are wonderful views opposite from the pathway overlooking the Lorne foreshore.

Distance 1.8 kilometres

Main Features

- Plenty of seating
- Generally easy graded footpaths
- On street accessible parking
- Access to the foreshore area
- Cafes, shops, Post Office, hotel



Visitor Information Centre to the Swing Bridge

Travel along the edge of the Erskine River from the Visitors Information Centre to the Swing Bridge at the river mouth on the beach. There are wheelchair accessible platforms, including fishing points beside the river in the adjacent caravan park area, an extended boardwalk and various seats on the journey to the Swing Bridge. Care is needed on this route as it has some steep and undulating surfaces and there is a shared road section used by vehicles entering or exiting the caravan park.

Distance 600 metres

Main Features

- Boardwalks
- View points
- Seats along the riverside
- Accessible toilet, parking and tourist information at the Visitors Information Centre



Lorne Foreshore

Discover many ways to spend time, relax and even enjoy a meal or coffee at a café beside the beach. This foreshore precinct extends from Grove Road to the Lorne Surf Club and contains a range of activity areas including beach areas, a skate park, sea baths, playground, BBQs and tables and seats. There are some steep pathways from the Mountjoy Parade level and there is only road access along Grove Road.

Distance 900 metres

Main Features

- Accessible toilet and parking spaces
- An accessible beach side boardwalk with seats
- Outside showers
- Views across the beach
- Playground, skate park, BBQs, tables and seats
- Beach areas, café, sea baths and Surf Club



Scotchman's Hill area

Various BBQs, tables and seats and a unisex accessible toilet are available in this area. Some steep, sealed and gravel surfaced pathways and stairs provide access from beach level. There are wonderful views overlooking the Lorne surf beach and across the ocean.

Distance 250 metres from the Lorne Surf Club

Main Features

- Unisex accessible toilet
- BBQs
- Many tables and seats
- Excellent views



Designated Accessible Facilities

- Toilet
- Car parking bay
- Recharge point
- Fishing point

Accessibility

- Accessible pathway (sealed)
- Accessible pathway (boardwalk)
- Accessible pathway (gravel or grass)
- Restricted access
- Ascending gradient up to 1 in 20 (manual wheelchair limit)
- Ascending gradient up to 1 in 14 (assisted wheelchair limit)
- Gradient very steep

Public Amenities

- Visitor Information Centre
- Neighbourhood safer place (Place of last resort)
- Seating
- Bus stop with shelter
- Toilet (non-accessible)
- Post office
- Public phone
- Post box
- ATM
- Bicycle rack
- Outside shower
- Picnic table
- Drinking fountain
- Barbeque
- Playground
- Scenic view

The map symbols highlight accessible features and the most appropriate routes to access some of the tourist locations and community facilities available in Lorne.

For further details of places of interest in Lorne, it is recommended that this map be viewed alongside tourist maps available at Visitor Information Centre.