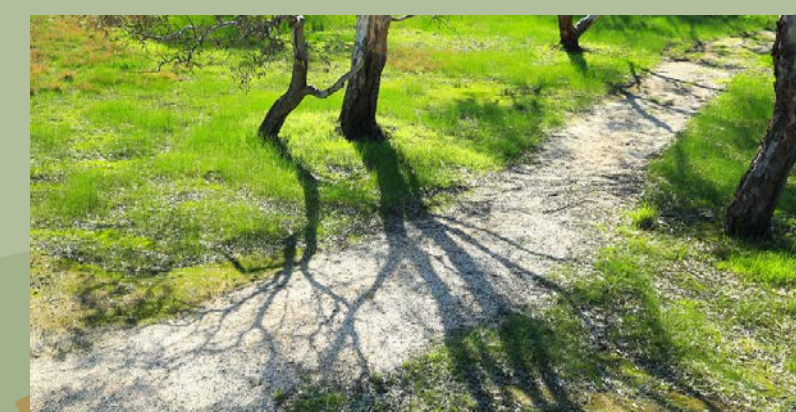


WINCHELSEA COMMON

Celebrating the unique natural values of the Winchelsea Common



Winchelsea Common

What We Heard

Introduction

The Winchelsea Common is a special place, home to nationally recognised grassy woodland vegetation and rich in local history. The site is highly valued by the people of Winchelsea.

The site was closed in 2012 due to contamination from gun club activities. The Department of Environment, Land, Water and Planning (DELWP) and Surf Coast Shire Council (SCS) are in the process of developing a plan to clean up the contamination and reopen the site safely to the community.

Community Engagement

In 2016 and 2017 DELWP and SCS undertook a series of engagement events including surveys, an onsite open day and a drop in session at the Winchelsea Farmers Market. These events sought ideas from the public about how they wanted to use the site in the future. Over 150 responses were received during these events. Key themes were:

1. Natural values*

Celebrating the natural values of the reserve including protection of the native flora and fauna, revegetating degraded areas and installing interpretive signage. Also a proposal to make the site a fauna rehabilitation and release centre.

**The native flora is a recognised community of national significance, Grassy Eucalypt Woodland of the Victorian Volcanic Plain, listed under the Environment Protection and Biodiversity Conservation Act 1999.*

2. Health and fitness

Including an all access shared pathway suitable for pedestrians and cyclists, perimeter running track, exercise equipment and drinking fountains.

3. Area for active recreation

Providing an area or facilities for young people and families to enjoy physical activities such as a bike park.

4. Gun Club

Disappointment that the Winchelsea Gun Club can no longer run its activities in the reserve.

5. Go Karts*

Proposals to keep the go kart track for go-karting in the reserve, possibly using electric go-karts.

**Residential development in this part of Winchelsea is likely to increase in line with the Growing Winchelsea Strategy. Go-karts are not considered compatible with expanding residential use. An acoustic consultant was engaged to provide advice on the potential operation of electric go-karts. After measuring electric go-karts at a facility in Melbourne, it was found that the distinctive whine of electric karts also makes them unsuitable for a residential area.*

6. General management of the Common

Concerns with day to day management of the Common including fire prevention activities and weed control.

Next steps/time frames

April 2017 – Submission of the Future Use Plan to SCS and DELWP for approval
May 2017 – Submission of the Clean up Plan (incorporating the Future Use Plan) to the Environment Protection Authority for approval

The Department of Environment Land Water and Planning together with the Surf Coast Shire went to the Winchelsea community to seek their feedback about how they wanted to use the Winchelsea Common (the common). The suggestions below were taken from surveys, an open shed event, site tours and the Winchelsea Farmers market.

Option	Outcome	Summary
Walking/bike path (shared path)	Yes	Consistent with values of site Minimum width of shared pathway is 2.5 m. Alignment constrained by contamination and flora values.
Dogs – general off lead, fenced dog off lead, dog on lead	Yes	On lead on shared pathways Potential for dog off lead area in uncontaminated & low value flora area.
Interpretive signage	Yes	Include information about the native flora and fauna species as well as cultural heritage and historic uses. The signage needs to appeal to a wide range and age of visitors.
Protect high value vegetation	Yes	Consistent with community feedback and compliant with vegetation protection legislation.
Birdwatching/wildlife observation	Yes	Could include seats or observation points and associated signage.
Historical/Cultural Heritage	Yes	Suitable for low key interpretation.
BBQ picnic facilities	Yes	Best if located with another asset and with good passive surveillance i.e. not hidden within reserve.
Friends of Winchelsea Common	Yes	There will be opportunities for interested locals to participate in restoration activities e.g. revegetation and landscaping.
External (perimeter) running track	Possible	Future possibility. Viability and alignment subject to flora values, contamination and linkages with Eastern Reserve. To be explored further in the future.
Fitness stations	Possible	Best located on the perimeter in conjunction with external running track or in Eastern Reserve.
Gravel/dirt mound bike track (BMX track, pump track)	Possible	Could be located within active use area subject to funding and local support.
Car Parking	Possible	Should be sited close to Eastern Reserve activity nodes with only a small amount of spaces required. Not suitable on Southern or Northern sides.
Shooting/Gun Club	Not this location	No longer appropriate/safe activity for this location.
Coffee shop/kiosk	Not this location	No supporting infrastructure (toilets, water) available onsite.
Housing	Not this location	Housing is inappropriate for public open space & high value conservation area.
Speedway, Motorbike track/motorbikes/ trailbikes	Not this location	Site not compliant with state Noise Control Guidelines for motor bike activities.
Drones	Not this location	Activity not compatible with other uses e.g. walking, potential public health issues if lands in contaminated area.
Mini golf/maze	Not this location	Activity not compatible with other uses e.g. walking. Potential public health issues if ball lands in contaminated area.

Option	Outcome	Summary
Archery	Not this location	Existing alternative archery centre available in Geelong and there are potential operational and safety issues i.e. safety of other users and potential for arrows to fall within contaminated areas.
Go Karts/Fun Karts/ Electric	Not this location due to noise requirements	Not compatible with residential area.
Soccer	Not this location as possible at Eastern Reserve	More suited to alternative sites within Winchelsea.
Radio/remote control car	Not this location, but maybe possible at another Winchelsea site	Needs flat asphalt surface. More suited to another site such as Eastern Reserve where it could be combined with a car park or playing court. Would require conditions around type of vehicles and timing of use.
Wildlife Shelter, rehabilitation	Not this location as the Common doesn't meet State standards for wildlife shelters and rehabilitation	Site does not meet state standards for operation of a wildlife shelter or for the release of rehabilitated wildlife.
Ball Sports	Existing facilities in Winchelsea	Existing facilities at alternative Winchelsea locations*.
Basketball	Existing facilities in Winchelsea	Existing facilities at alternative Winchelsea locations**.
Tennis	Existing facilities in Winchelsea	Existing facilities at Hesse Street Reserve.
Disc Golf	Existing facilities in Winchelsea	Activity not compatible with other uses e.g. walking, potential public health issues if lands in contaminated area.
Skate Park	Second skate park not needed/required	Existing facility located in Winchelsea.
Waterpark	Existing facilities in Winchelsea	Existing aquatic facility in Winchelsea.
RV Parking	Existing facilities in Winchelsea	Existing alternative sites within Winchelsea.
Market	Existing market site in Winchelsea	No supporting infrastructure (toilets, water) onsite. Existing market held at alternate Winchelsea location.
Pony Club/Horse Riding	Regional facilities available at Mount Moriac (Barwon Valley Riding Club) and Freshwater Creek	Site not big enough without impacting high value vegetation and there are existing riding facilities within the district.
Playground	Planned facility for Eastern Reserve	New playground proposed as part of Eastern Reserve development. No need for a second playground so close to Eastern Reserve.

*See Surf Coast Shire Open Space Strategy 2016-2025

**See Growing Winchelsea Shaping Future Growth Plan 2015

To find out more about the Winchelsea Common please visit: www.engage.vic.gov.au/winchelsea-common or contact Sally Patterson on (03) 5226 4780



WINCHELSEA COMMON

Celebrating the unique natural values of the Winchelsea Common

Winchelsea cultural & indigenous history

CULTURAL HERITAGE

INTERPRETIVE WALK

RARE PLANTS

Volcanic plains & grassy woodlands

NATIVE VEGETATION

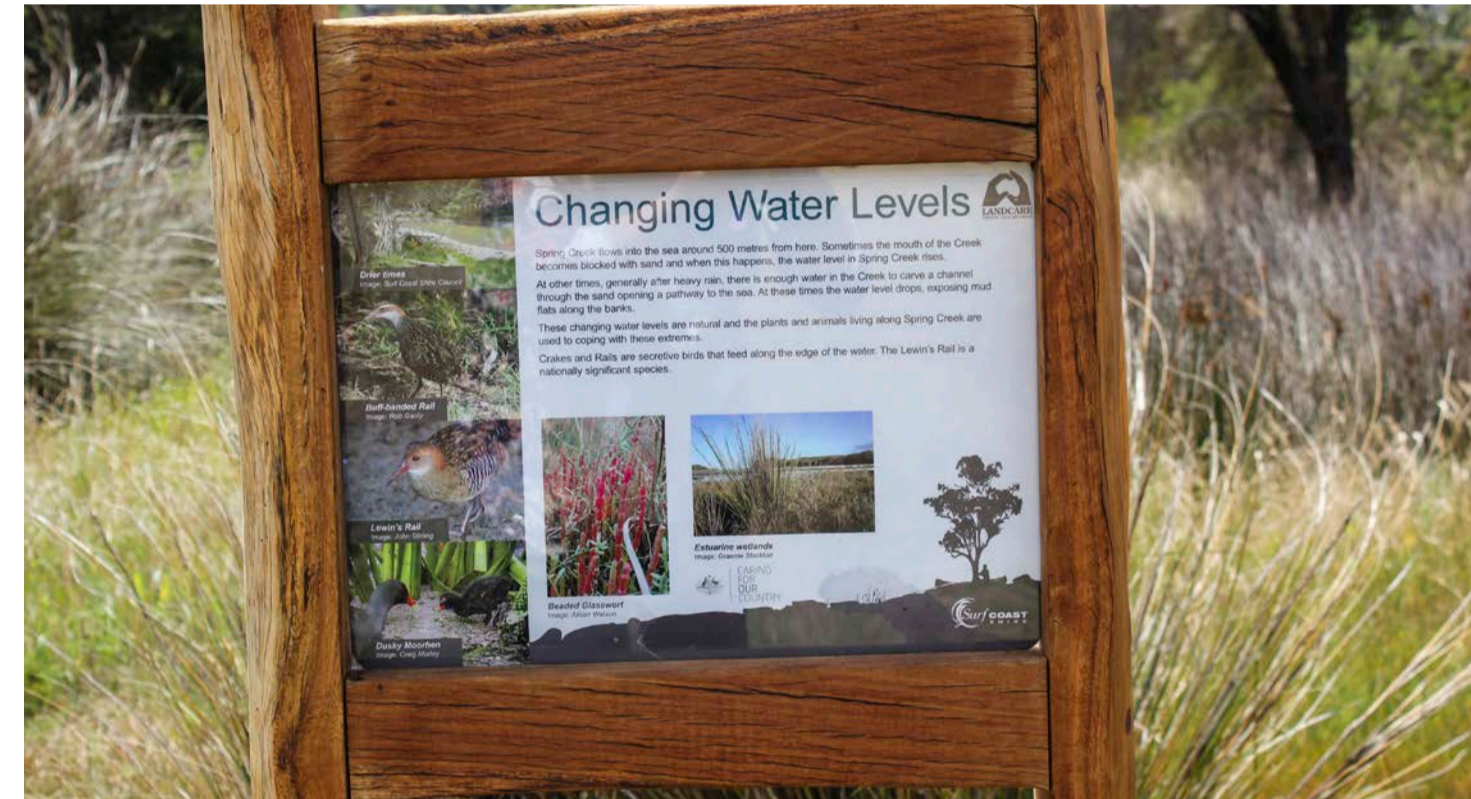
Revegetation of native species in degraded areas or landscaping degraded areas

Future Use Plan

Overall objective: Celebrating the unique natural values of the Winchelsea Common



Potential design for possible walking path



Potential design for interpretive signage along pathway



Existing Kangaroo grass (Themeda triandra)



Wildlife found in the common



Existing River Redgums



Existing Pink bindweed (Convolvulaceae)

Future use areas

- **Community Focus** - designated area for park entry that incorporates picnic facilities
- **Fenced Contaminated Zone** - area of high natural values, yet due to contamination the area must be cordoned off as it is not suitable for human access
- - - **Interpretative Shared Path** - a pathway through the reserve that has interpretive signage and/or artworks at key locations
- ▨ **Active Recreation** - area to be fully remediated with an active recreation zone area (e.g. bike riding)
- ▨ **Native Revegetation** - revegetation of native species in degraded areas, using local indigenous species
- ▨ **Possible Future Linkages** - active uses such as playgrounds and exercise that align with a recreation reserve
- P **Parking Areas** - along roads to the south west of the reserve and protect the boundaries of the reserve
- **Dog Off Lead Area** - potential designated area for dogs off lead

To find out more about the Winchelsea Common please visit: www.engage.vic.gov.au/winchelsea-common or contact Sally Patterson on (03) 5226 4780

WILDLIFE

Interpretive signage describing local birds, animals and reptiles

LANDSCAPE FORM

Volcanic plains, soil types & the environment